



Solar Panel Mounting Brackets Roll Former Machines Automatic Solar Panel Framing Machine

Our Product Introduction

for more products please visit us on roll-formermachines.com

Basic Information

- Place of Origin: Zhejiang, China
- Brand Name: Hangzhou Maxwell
- Certification: CE, ISO9001
- Model Number: Solar Strut Channel-001
- Minimum Order Quantity: 1 SET
- Price: USD24000-USD35000
- Packaging Details: Nude Packaging in a 40 feet container
- Delivery Time: 60 work days
- Supply Ability: 20 sets per month

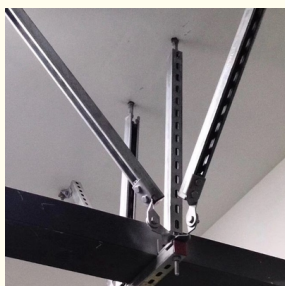


Product Specification

- Name: Automatic Solar Panel Framing Machine
- Applicable Industries: Hotels, Garment Shops, Building Material Shops, Printing Shops, Construction Works, Energy & Mining, Food & Beverage Shops, Advertising Company, Manufacturing Plant, Machinery Repair Shops, Food & Beverage Factory, Farms, Restaurant, Home Use, Retail
- Tile Type: PPGI
- Forming Speed: 15-20m/min
- Rolling Thickness: 2.0-2.5mm
- Feeding Width: 20-400mm
- Warranty Of Core Components: 1 Year
- Transmission Way: Gearbox Drive
- Highlight: **Automatic Solar Panel Framing Machine, Mounting Brackets Roll Former Machines**



More Images



Product Description

Automatic Solar Panel Framing Machine Solar Strut Channel Solar Panel Mounting Brackets Roll Forming Machine

Automatic Solar Strut Channel Solar Panel Mounting Brackets Roll Forming Machine

Solar panel mounting brackets are crucial components in solar power systems, ensuring the proper installation and performance of solar panels. These brackets provide sturdy support and secure fastening, optimizing the panels' angle to maximize sunlight exposure. Additionally, they offer strong resistance to wind and seismic forces, enhancing the durability and efficiency of the entire solar installation.

Components of Line

NO.	Name	Main Parameter
1	Hydraulic decoiler	5Tons
2	Leveler	9 roller levelling
3	Servo Feeder	5.5KW
4	Punching Machine	80 Tons
5	Main Roll Forming Machine	Forming Speed:15-20m/min
		Forming Station: 20Stands
		Material of Rollers: GCr15 bearing steel and CR12MoV with quench treat
		Transmission Way: Gearbox Drive
		Shaft Diameter: 80mm
6	Pressure System	Quantity of Flow:0.5m³/min
7	Hydraulic cutting device	7.5KW
8	PLC Control System	Siemens
9	Output Table	Length: 3m

Servo Feeder

The servo feeder features multi-stage feeding capabilities, allowing you to input 10 different feed lengths. Its LCD touchscreen display makes it easy to modify and set various technical parameters. Additionally, the automatic sensing start system is synchronized with the punch press, controlling the press's activation for seamless operation.



Pneumatic tracking, hydraulic cutting

The tracking cutting unit operates independently, controlled by a PLC system, allowing for adjustable cutting lengths. It employs a continuous tracking cutting process, which prevents deformation of the cut ends and significantly enhances production efficiency.



Our Factory

Welcome to Hangzhou Maxwell, a leader in roll forming machine manufacturing with over 20 years of experience. Our state-of-the-art facilities in

Hangzhou, Wuxi, and Botou are equipped with advanced technology and staffed by an expert team dedicated to innovation and quality. We specialize in custom solutions tailored to your needs, ensuring top performance and efficiency. Partner with us for superior products and exceptional service.



Packaging and Shipping

1. Anti-corrosion oil is sprayed during transportation to prevent oxidation of the machine
2. Packaging isolation film to prevent machine oxidation during transportation
3. Fixed on the container with wire to prevent damage to the machine during transportation



Terms of Trade

1. Minimum order quantity (MOQ): 1 set
2. Delivery time: about 60 workdays
3. Port of loading: port of Shanghai
4. Type of payment: by T/T or by L/C

After-sales Service

1. Technical Support: Our experienced technical team is available to provide assistance and guidance on product installation, operation, and maintenance.
2. Spare Parts Supply: We maintain a stock of genuine spare parts to quickly solve any equipment issues and minimize downtime.
3. Training Programs: We offer training programs for your staff to ensure they are proficient in using and maintaining our equipment effectively.
4. Warranty Coverage: The warranty is one year after the client receives the machine. All our products come with a warranty period, during which we provide prompt repair or replacement services for any defects covered under the warranty terms.
5. Regular Maintenance: We recommend and offer scheduled maintenance services to keep your equipment in optimal condition and maximize its lifespan.
6. Customer Feedback: We value your feedback and continuously strive to improve our products and services based on your input.

 **Maxwell** Hangzhou Maxwell Machinery Equipment Manufacturing Co., Ltd



0086-19560190257



info@hzmaxwellmachine.com



roll-formermachines.com

Building 2, No.6, Zhuluo East Road, Linpu Town, Xiaoshan District, Hangzhou City, Zhejiang Province