



## Metal Scaffold Plank Scaffolding Steel Walk Board Roll Forming Machine High Speed

Our Product Introduction

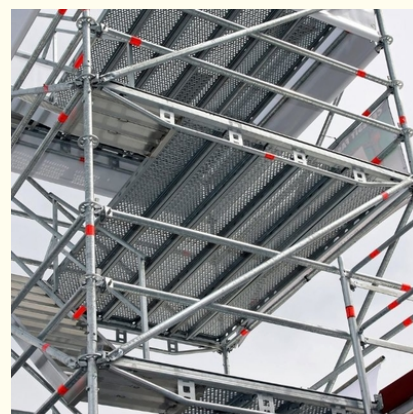
### Basic Information

- Place of Origin: Jiangsu, China
- Brand Name: Hangzhou Maxwell
- Certification: CE, ISO9001
- Model Number: Scaffolding--001
- Minimum Order Quantity: 1 SET
- Price: USD55,000-USD110,000
- Packaging Details: Nude Packaging in a 40 feet container
- Delivery Time: 60 work days
- Payment Terms: T/T, L/C
- Supply Ability: 10 sets per month



### Product Specification

- Name: Scaffolding Board Roll Forming Machine
- Applicable Industries: Building Material Shops, Printing Shops, Construction Works, Energy & Mining, Food & Beverage Shops, Advertising Company, Manufacturing Plant, Machinery Repair Shops, Food & Beverage Factory, Farms, Restaurant, Home Use, Retail
- Tile Type: PPGI, PPGL
- Warranty: 1 Year
- Rolling Thickness: 1.5-1.8mm
- Feeding Width: 595-600mm
- Core Components: Pressure Vessel, Motor, Bearing, Gear, Pump, Gearbox, Engine, PLC
- Voltage: 380V, 50HZ, 3PH (Or As Customers' Request)
- Highlight: High Speed Walk Board Roll Forming Machine, Steel Walk Board Roll Forming Machine



### More Images



for more products please visit us on [roll-formermachines.com](http://roll-formermachines.com)

## Product Description

Fully Automatic High-Speed Scaffold Plank Scaffolding Steel Walkboard Roll Forming Machine

### Metal Scaffold Plank Scaffolding Steel Walkboard Roll Forming Machine

The scaffolding plank roll forming machine is expertly designed to produce high-quality scaffolding planks, which are essential in construction and related industries.

Scaffolding planks play a crucial role in providing a safe, durable, and versatile platform for various tasks. Their robust application ensures worker safety, boosts productivity, and significantly enhances the overall efficiency of construction projects. These planks are indispensable for creating secure and stable work surfaces, thereby contributing to the success and safety of any construction endeavor.



#### Components of line:

No.	Name	Describe	Qty
1	Hydraulic decoiler	3Tons	1Set
2	Leveler	Working roller: nine rollers type leveling machine	1Set
3	Servo Feeding Machine	Feature: Uses the servo motor-driven	1Set
4	Punching Press	200Tons	1Set
5	Main Roll Forming Machine	Forming Station:28stands Forming Speed:8-12m/min Gearbox drive	1Set
6	PLC Control System	Siemens	1Set
7	Hydraulic Station System	5.5KW	1Set

#### Hydraulic Decoiler



### **Servo Feeding Machine**

Function: Feeding material.

Feature: Uses the servo motor-driven. Multistage type feeding: May input 10 groups of different feeding lengths, The liquid crystal touching screen demonstrated is advantageous for the change, and establishes various technical parameters. The auto-induction start system and the punch press linkage (control punch press start).



### **Packaging and Shipping**

1. Anti-corrosion oil is sprayed during transportation to prevent oxidation of the machine



2. Packaging isolation film to prevent machine oxidation during transportation
3. Fixed on the container with wire to prevent damage to the machine during transportation



#### After-sales Service

1. Technical Support: Our experienced technical team is available to provide assistance and guidance on product installation, operation, and maintenance.
2. Spare Parts Supply: We maintain a stock of genuine spare parts to quickly solve any equipment issues and minimize downtime.
3. Training Programs: We offer training programs for your staff to ensure they are proficient in using and maintaining our equipment effectively.
4. Warranty Coverage: The warranty is one year after the client receives the machine. All our products come with a warranty period, during which we provide prompt repair or replacement services for any defects covered under the warranty terms.
5. Regular Maintenance: We recommend and offer scheduled maintenance services to keep your equipment in optimal condition and maximize its lifespan.
6. Customer Feedback: We value your feedback and continuously strive to improve our products and services based on your input.

 **Maxwell** Hangzhou Maxwell Machinery Equipment Manufacturing Co., Ltd

 0086-19560190257

 [info@hzmaxwellmachine.com](mailto:info@hzmaxwellmachine.com)

 [roll-formermachines.com](http://roll-formermachines.com)

Building 2, No.6, Zhuluo East Road, Linpu Town, Xiaoshan District, Hangzhou City, Zhejiang Province