

Steel 10-15m/Min PLC Controlled Wall Panel Roll Forming Machine With Hydraulic Cutting

Our Product Introduction

Basic Information

- Place of Origin: Zhejiang, China
- Brand Name: Hangzhou Maxwell
- Certification: CE, ISO9001
- Model Number: Roof Panel
- Minimum Order Quantity: 1 Set
- Price: USD12000--USD25000
- Packaging Details: Nude Packing In a 40 Feet Container
- Delivery Time: 60 workdays
- Payment Terms: T/T; L/C
- Supply Ability: 30 Set per Mon



Product Specification

- Voltage: 220V
- Control System: PLC
- Rolling Speed: 10-15m/min
- Material: Steel
- Frequency: 50Hz
- Application: Roofing And Wall Cladding
- Cutting Type: Hydraulic
- Thickness: 0.3-0.8mm
- Name: Wall Panel Roll Forming Machine
- Highlight: **PLC Controlled Wall Panel Roll Forming Machine**
, 15m/Min Wall Panel Roll Forming Machine,
10m/Min Wall Panel Roll Forming Machine



More Images



Product Description

Product Description:

Our Ceiling Roll Forming Machine is specifically designed for the production of ceiling panels. With a speed of up to 30 meters per minute, it can produce panels of various shapes and sizes. It is easy to operate and maintain, making it an ideal choice for any production facility.

The Keel Roll Forming Machine is perfect for producing light gauge steel framing for various applications. With a speed of up to 50 meters per minute, it can produce high-quality keel sections of different sizes. It is equipped with an automatic control system, ensuring consistent and accurate production.

Our Container House Roll Forming Machine is designed for the production of steel structures used in the construction of container houses. With a speed of up to 20 meters per minute, it can produce high-quality steel structures with precision and accuracy. It is easy to operate and maintain, making it an ideal choice for any production facility.

All our Roll Former Machines come with a 1-year warranty, ensuring that our customers receive the best quality and service. They operate on a standard voltage of 220V, making them suitable for use in any facility.



Features:

Product Name: Roll Former Machines
Voltage: 220V
Control System: PLC
Application: Roofing And Wall Cladding
Power Source: Electric
Rolling Speed: 10-15m/min

Technical Parameters:

Parameter	Value
Frequency	50Hz
Rolling Speed	10-15m/min
Thickness	0.3-0.8mm
Voltage	220V

Application	Roofing And Wall Cladding
Power Source	Electric
Material	Steel
Cutting Type	Hydraulic
Control System	PLC
Warranty	1 Year



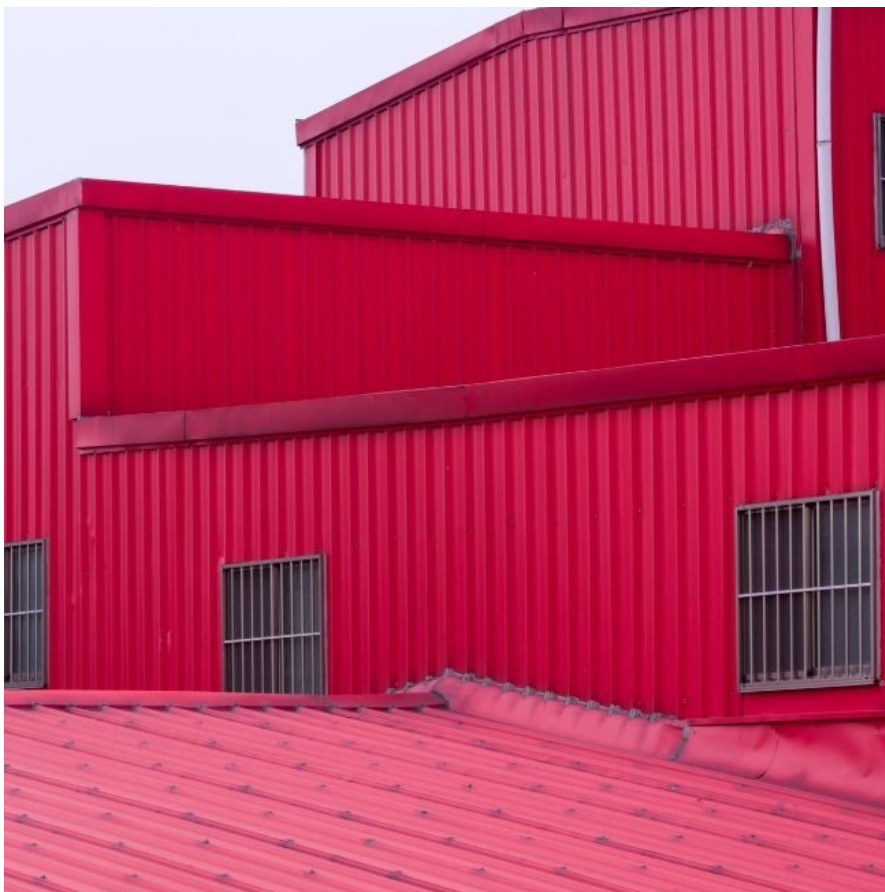
Applications:

Our roll former machines have a rolling speed of 10-15m/min and are made with high-quality steel material. They are designed for various roofing and wall cladding applications. Our machines are equipped with a hydraulic cutting type and a control system of PLC, which makes them easy to operate and highly efficient.

We offer a range of roll former machines, including the Double Layer Roll Forming Machine, Automatic Roll Forming Machines, and Carriage Board Roll Forming Machine.

The Double Layer Roll Forming Machine is designed for producing two different types of roofing sheets, while the Automatic Roll Forming Machines are designed for producing a variety of roofing sheets. Our Carriage Board Roll Forming Machine is ideal for producing carriage boards used in the transportation industry.

With our high-quality roll former machines, our customers can produce roofing and wall cladding materials that are both durable and aesthetically pleasing. Our machines are perfect for use in construction sites, factories, and other industrial settings.



Support and Services:

The Roll Former Machines product technical support and services include:

Installation and setup assistance

Telephone and email technical support

Onsite training for operators and maintenance personnel

Remote diagnostics and troubleshooting

Warranty and repair services

Replacement parts and accessories

Our team of experts is dedicated to providing exceptional support and services to ensure that your Roll Former Machine operates at peak performance and efficiency.

Packing and Shipping:

Product Packaging:

The Roll Former Machines will be packed in sturdy wooden crates to ensure safe transportation. The machines will be securely fastened and protected with foam and bubble wrap to prevent any damage during shipping.

Shipping:

We offer worldwide shipping for our Roll Former Machines. The shipping cost will depend on the destination and weight of the shipment.

We will provide a shipping quote and estimated delivery time upon request. Please note that any additional customs fees or taxes imposed by the destination country are the responsibility of the buyer.



Maxwell Hangzhou Maxwell Machinery Equipment Manufacturing Co., Ltd



0086-19560190257



info@hzmaxwellmachine.com



roll-formermachines.com

Building 2, No.6, Zhuluo East Road, Linpu Town, Xiaoshan District, Hangzhou City, Zhejiang Province